



BUSTLE & SEW
LOVE TO SEW AND SEW WITH LOVE

Vintage Ballerina Transfers



"The Ballerinas"

Designed by *Penelope*

Ethereal little dancers float gracefully round the edge of a coffee cloth or in the centre of a tea-cloth. The small sketch shows a dainty arrangement of the figures on a blouse and the small posies on lingerie.

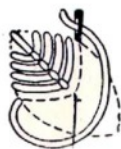
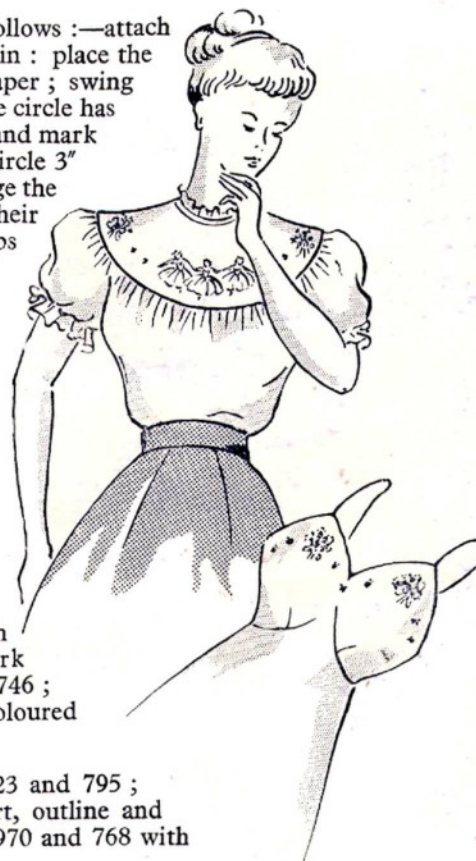
MATERIALS. (For coffee cloth.) Dewhurst's Sylko¹Mouliné (stranded), 2 skeins, Ecreu 816, Jade 970 ; 1 skein each Yellow 756, Orange 704, Flame 976, Pale Pink 720, Flesh 878, Pink 723, Rose Pink 347, Dark Pink 746, Mauve 811, Purple 795, Light Blue 782, Light Turquoise 768, Dark Turquoise 880, Dark Jade 856, Black 808. A piece of cream material 25 $\frac{3}{4}$ " x 25 $\frac{3}{4}$ " Crewel Needles Nos. 5 and 6.

MEASUREMENTS. Design 20" diameter.

INSTRUCTIONS. Construct a circle on a piece of paper as follows :—attach a pencil to a piece of string, 9 $\frac{1}{2}$ " along the string attach a drawing pin ; place the paper on a board or table and press the drawing pin into centre of paper ; swing the pencil round in an upright position on the paper until a complete circle has been marked. Cut out the paper shape, place on centre of material and mark round the edge with pins or a tacking thread, then mark another circle 3" outside this one. Separate the figures etc., on the transfer and arrange the three ballerinas at equal distances round the cloth, the edges of their skirts touching the marked circle ; the three sections of the "corps de ballet" are arranged between these with four tiny rosebuds placed between the figures to form a circle : the rosebuds should be about three quarters of an inch from the marked line. Pin in place and iron off.

The embroidery is carried out with three strands of thread in the needle for the dresses and French knots ; two strands for the flesh, hair, shoes and bodices of the small ballerinas, the spots and yellow frills of the ballerina, black bows and leaves ; one strand for all features. Six strands of thread are used for the edging. The dresses are all worked in stem stitch unless otherwise stated and spots French knots. The flesh is worked in stem stitch using 878 ; eyes and eyebrows stem stitch and straight stitches 808 ; lips straight stitches 746 ; hair and shoes stem stitch and satin stitch 808. All roses are embroidered in French knots and straight stitches similar to raised roses, using the dark shade for the centres : the colours are in two groups 720, 723 and 746 ; 756, 704 and 976. All rose leaves are lazy daisy stitch 856. The coloured illustration shows the placing of the various shades.

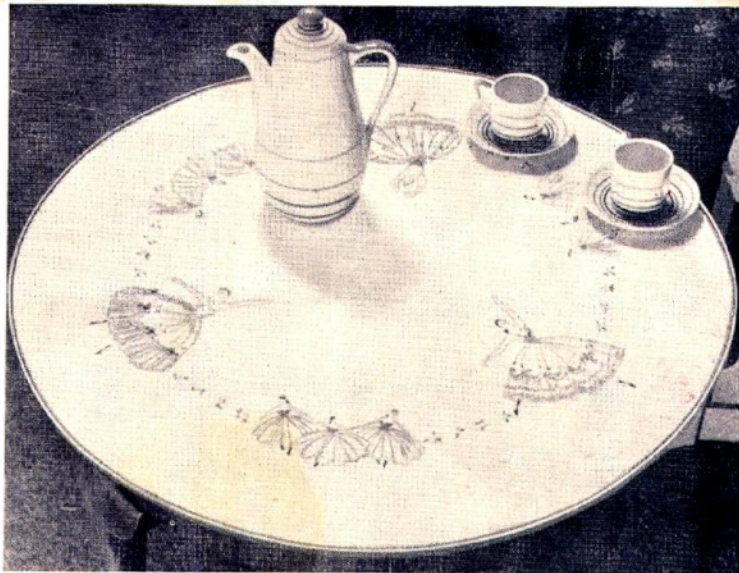
Ballerina with Pink Bodice. Bodice, long and short stitch 723 and 795 ; waistline stem stitch 808, shoulder straps stem stitch 723. Skirt, outline and main folds 970, inner folds 880 ; edging zig-zag straight stitches 970 and 768 with straight stitches between of 782 and 811.



ROUMANIAN



FRENCH-KNOT



Ballerina with Blue Bodice.

Top of bodice, Roumanian stitch 768, straps stem stitch same colour ; remainder, lines of stem stitch 768, 782, and 811.

Skirt : top portion outlined 723, folds 720 and 723 : lower portion, 768 for outline at right side with folds of 768 and 782 : the folds towards left side are 782 and 811 with outline 782.

Garland between roses, stem stitch 970 ; frills zig-zag stitches using 768, 782 and 811, the darker colours being used at the left side.

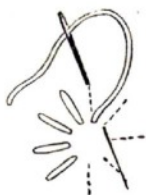
Ballerina with Green and Yellow Bodice. Bodice ; stem stitch outline and shoulder straps 970 ; spots 756. Skirt : outline 782 ; folds straight stitches 768, 782 and 811 ; garland between roses stem stitch 811, bows stem stitch 808 : frill, outline and folds 880 with spots 970 ; edging zig-zag stitches 880 and 756.

Corps de Ballet. All bodices long and short stitch 795 edged French knots 723. The centre dancer has skirt outlines and folds 768 and 782, edged spots 347. The remaining dancers have skirt outlines and folds 970 and 880, edged spots of 756. The small separate figures are worked in a similar manner and the tiny posies of roses are edged with French knots in 768 with stem stitch bows 811.

To Make Up. Cut the material to shape round outer edge. Working on the wrong side roll the raw edge tightly over about $\frac{1}{8}$ " , then using sewing cotton overcast, with even stitches which whip the edge without sewing through the roll. Work over the edge with braid stitch edging using 816.

When completed press on the wrong side using a hot iron over a damp cloth.

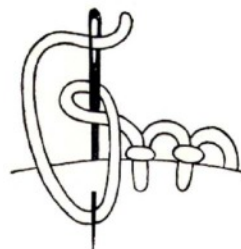
Braid Stitch Edging. With the right side of work facing roll back the overcast edge and with the edge to be worked held away from you, work from right to left. Pass the needle with the loop round it under the hem and bring it to the surface as if working a buttonhole edge. When pulling the thread through in order to tighten the knot draw the thread away from you : before tightening the knot make sure that each loop is the same size, as any irregularity spoils the look of the finished work.



STRAIGHT



STEM



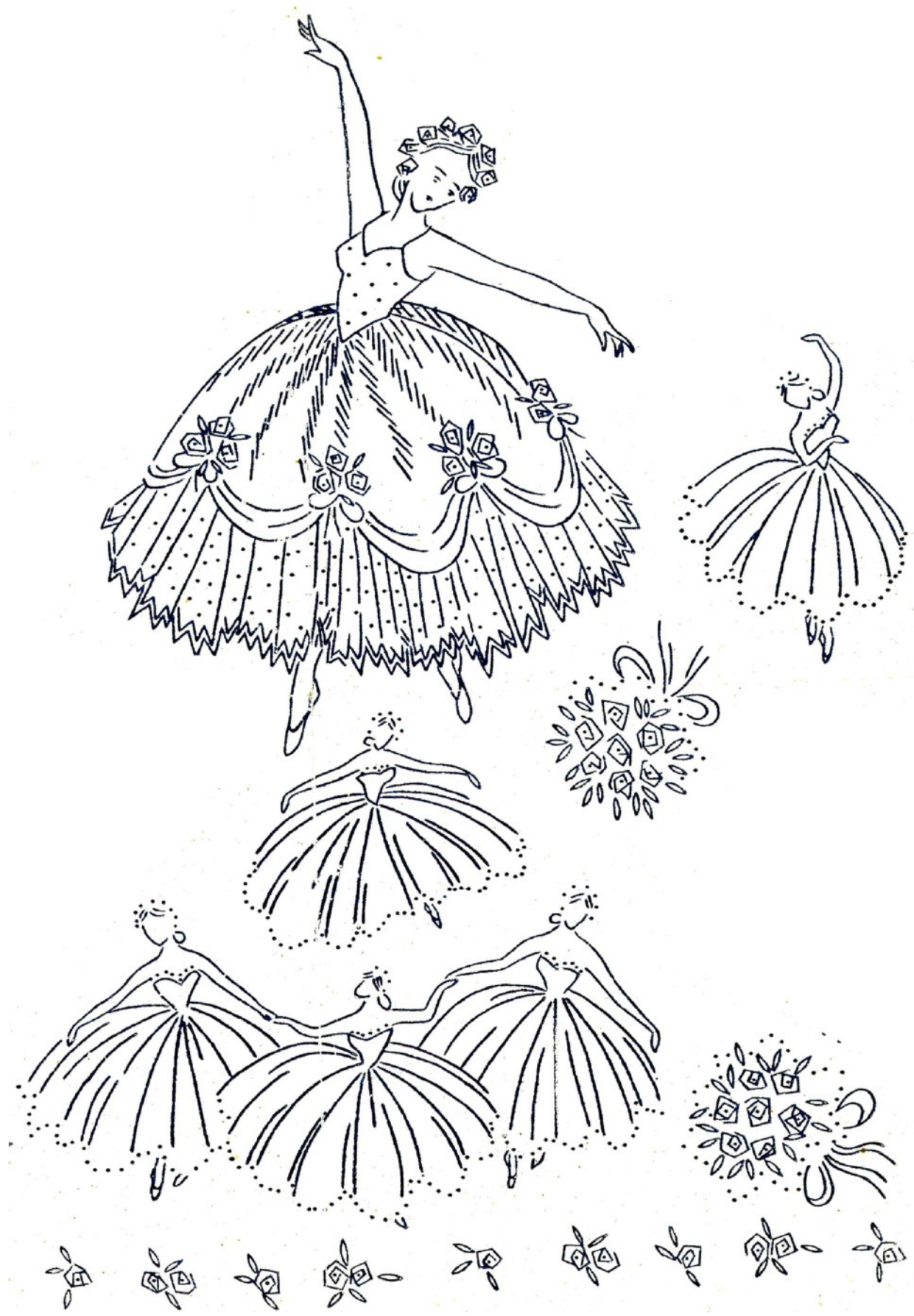
BRAID EDGING

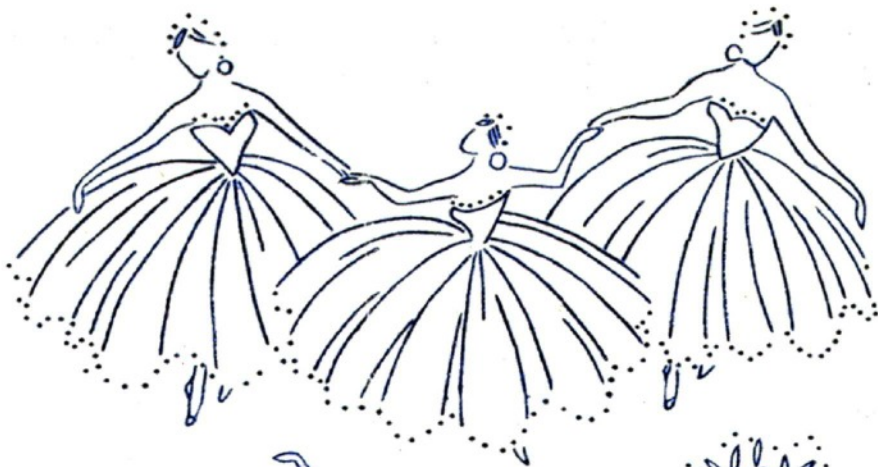
HE BALLERINAS "TRANSFER LEAFLET 1002

MADE IN GREAT BRITAIN

BRANDNIMEN VUORU NEUVUUDICTE SVIKU MULLINIE (KORVAANEN)







Bustle & Sew Magazine

more than just another sewing magazine - it's a jolly good read too!



3 issues for only \$7.50 (that's less than £5)
when you subscribe

and you'll also receive some lovely free goodies!

www.bustleandsew.com/magazine