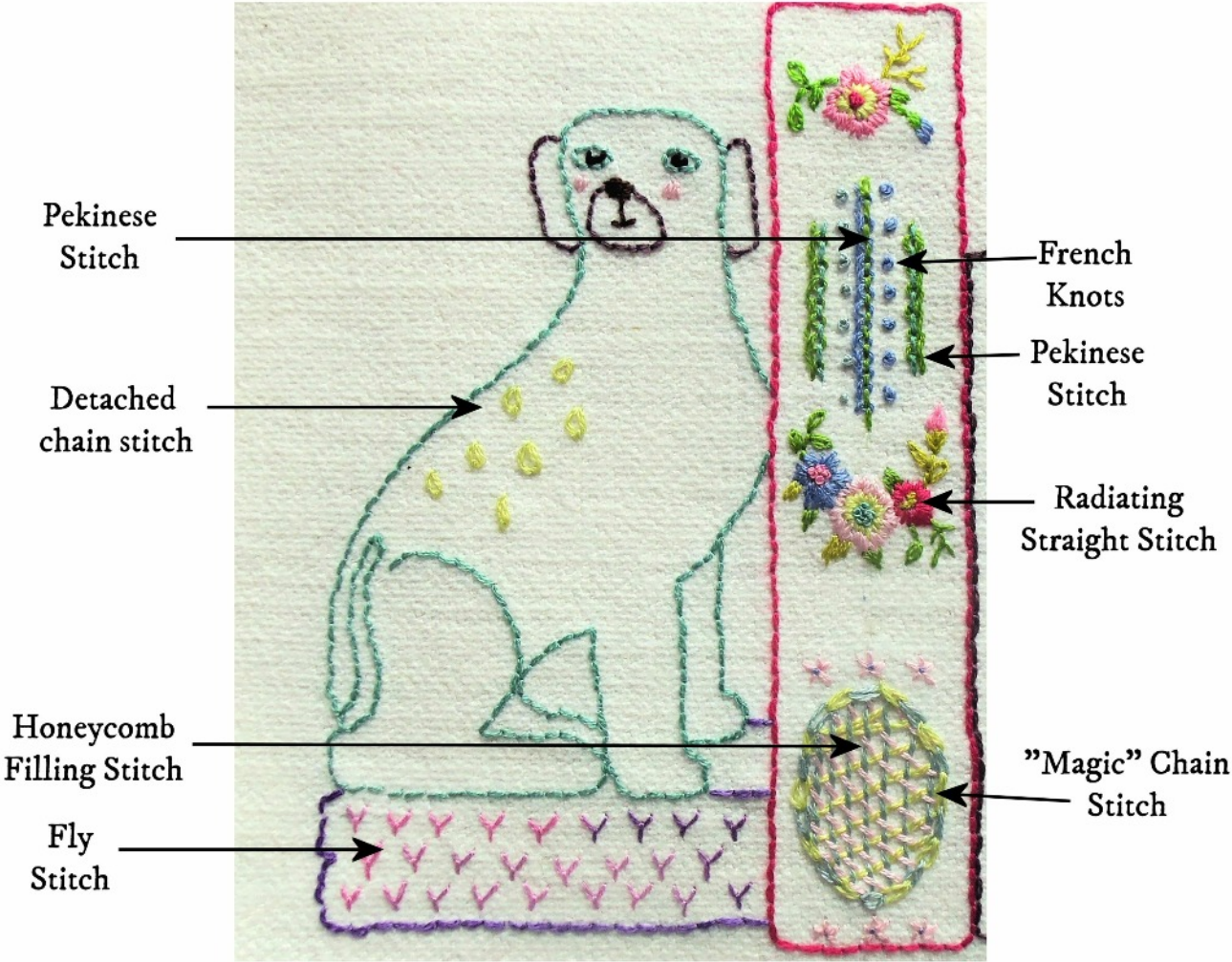




A Library of Stitches

Week One

Guide to Stitches Used Week One



HONEYCOMB FILLING STITCH

(Fig. 182)

Also known as NET PASSING STITCH.

In order to keep this stitch of even tension, it is practically essential to work it in an embroidery frame. Commence by laying the horizontal stitches right across the space to be filled, making the space between each exactly even. Next lay another series of stitches as before but diagonally across from the lower left to the upper right side. These are *not* interlaced with the horizontal stitches, merely laid over them. The inter-

lacing comes with the third series of stitches which are also diagonal but placed at right angles to the other diagonal row, and made to pass under the horizontal and over the diagonal stitch, interlocking the whole

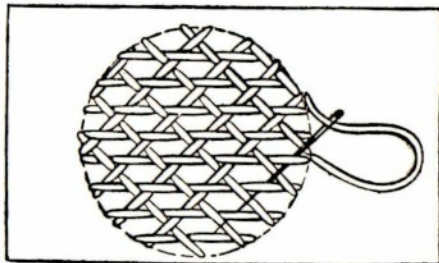
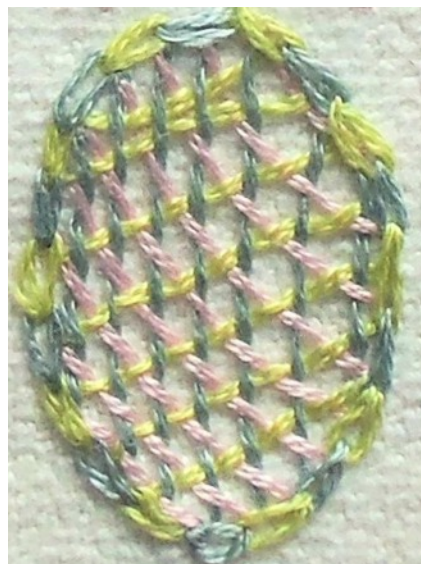
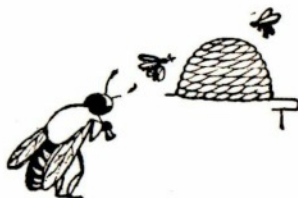


Fig. 182

design. These three layers of threads should meet at regular intervals to form a closely interlocked triangle. Similar or contrasting colours may be used for the whole filling. See Fig. 183 for Honeycomb Filling Stitch as a Drawn Fabric Stitch.





A selection of bright clear colours from all around the colour wheel, but of more or less the same tones.

Also metallic thread and some beads.



The two colour flowers are worked in radiating straight stitch.

I find it easiest to imagine a clock and place my first stitches at 3, 6, 9 and 12 o'clock then go around and fill in between them - this helps me make sure that they are even.

The centres of the large flowers are French knots